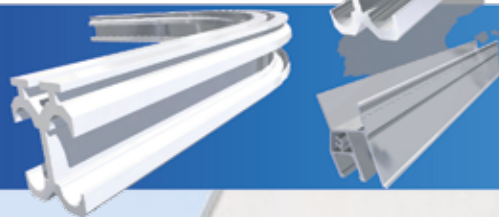


DOCO[®]

INTERNATIONAL

part of your door



**DOCO INTERNATIONAL:
YOUR SUPPLIER OF SIDE SLIDING
SECTIONAL DOORS**

DOCO SSD-Kit[®]



**Europe's
BEST
SIDE SLIDING
DOOR**

New: DOCO Side Sliding Door - Kit - DOCO SSD-Kit® the solution for your side sliding door requirements

DOCO: your trusted supplier

25

For over 25 years DOCO has built up trustful relationships with prominent producers of sectional overhead doors. We currently export our innovative products successfully to more than 40 countries; primarily through the fact that DOCO only offer high quality products and components which allows our customers to grow further. Our quality determines our price. Our flexibility, professionalism and knowledge provide an excellent service to you! We extend our hand of partnership and we will open doors together...ask us for our possibilities!

-exclusive European partner of Guttomat-

New trend: Side sliding doors!

It is a fact, the side sliding garage door is the new and growing trend in the industry. The system offers a lot of advantages compared to traditional garage doors. Pedestrian access without fully opening the door is already available and the system also offers safety and heat savings. We have seen in both the residential garage door market and in the industrial door market that there is a growing demand for side sliding garage doors and more and more end users are appreciating the advantages of this type of garage door and choose for this solution.

New: as of today we offer our side sliding door to you as an easy-to-install kit, the DOCO SSD-KIT®. These kits have been designed to provide component systems that are of high quality and functionality, many of which have been patented. The side sliding door kits are an innovation when it comes to quality, individuality and installation and DOCO have designed the kits to be compatible with several types of panels:

- Kingspan
- Bremet / Metecno
- Thyssenkrupp – Bausysteme
- Ryterna

Of course we have the possibility to make the DOCO SSD – KIT suitable for more panels. Please contact our sales department to discuss all possibilities.

Flexible configuration

With the introduction of the side-sliding door kits we offer a high quality solution, in fact the best system on the market! We now have an answer to the growing demand and you have the opportunity to easily build the best side sliding door you will ever make.

These kits have been assembled by our R&D department by using Guttomat patented components. Guttomat -Europe's best producer of side sliding doors- have given the exclusive rights to Doco to sell the DOCO SSD-KIT® throughout Europe.

"LET'S DEVELOP AND WORK TOGETHER"

Unique advantages of the side sliding door in combination with the

DOCO SSD-Kit®

DOCO only chooses for quality. And you?

- ✓ Easy mounting for new building construction and renovation.
- ✓ No requirement for built in floor channel.
- ✓ Innovative closure. Door can be adjusted in height after mounting and has a double brush sealing, furthermore the SSD-Kit® contains a guiding profile which can be adjusted in height as well.
- ✓ Maximum security combined with ease of opening. Due to the ball bearing aluminium guiding profile, the door opens and closes whisper quietly.
- ✓ Door can also be partially opened eliminating the need for expensive wicket doors.
- ✓ Superb quality. All components have been tested and are made of aluminium and with glass fibre polyamide ensuring low maintenance and superb anti-corrosion properties, ensuring years of trouble free operation.
- ✓ Space saving and can be used to suit all opening constructions.
- ✓ aesthetically pleasing. Our system is suitable for every kind of door opening.

Advantages DOCO SSD-Kit®, for side sliding doors:

- ✓ Most exclusive kit in the market
- ✓ 100% free of corrosion
- ✓ Double ball bearing guiding profiles
- ✓ Mounting on the existing floor
- ✓ Double brush sealing
- ✓ In height adjustable guiding profiles
- ✓ In height adjustable brush sealing
- ✓ Solid tracks (aluminium)
- ✓ Safe guidance
- ✓ Silent
- ✓ Easy opening manually or electrically



"WE THINK AND WE ACT GLOBAL!"

Optional articles:

Guidance (art. 20051-L or 20051-R)

Necessary when side building space between wall and door is between 250mm and 500mm

Operator guidance (article number 60100)

Necessary to mount an operator in case side building space between wall and door is between 600mm and 1.100mm

Operator bracket (art. Number 60101)

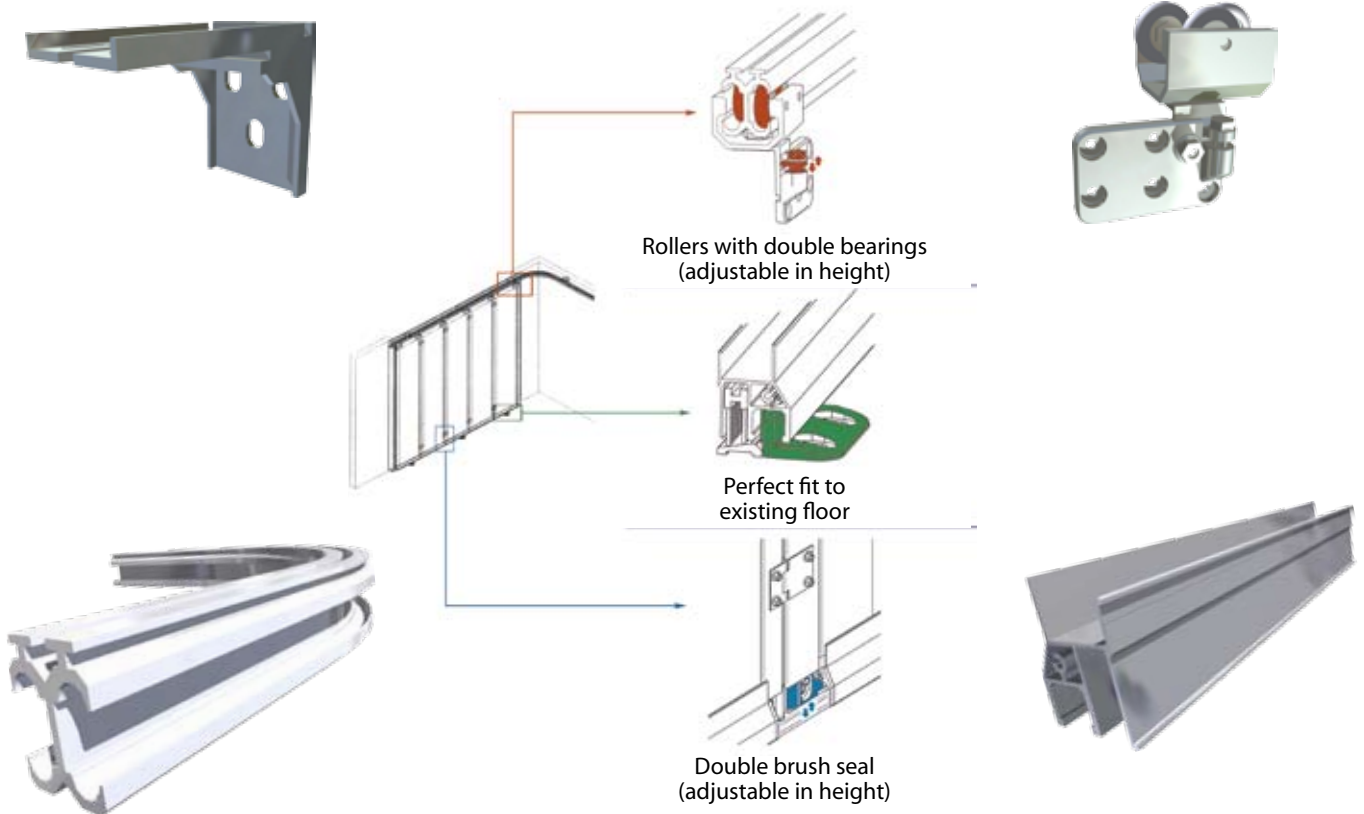
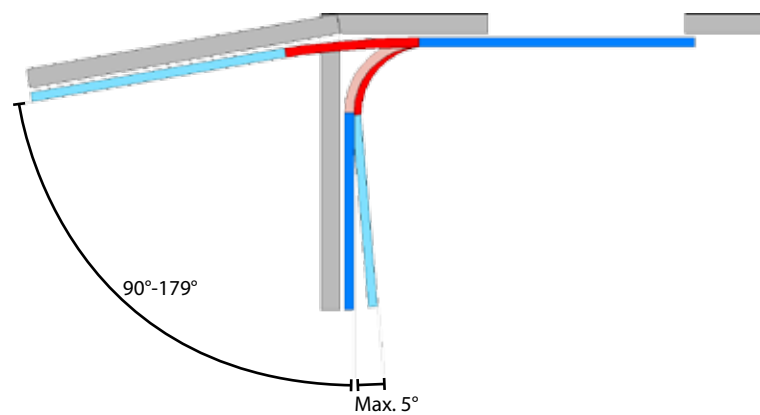
Must be used for an easy mounting of the operator to the ceiling

Lock (art. Number 72001)

To be used for manual operated doors to close your door

Curves with different ° (art.number 72010-XXX)

To be ordered in case of diagonal walls (possible to deliver between 85° and 179°),
delivery time: 2-3 weeks.



"DOCO PRESENTS: PERFECT KNOWLEDGE FOR A WORLD WIDE SUCCESS!"

"DOCO: YOUR PARTNER IN BUSINESS"

Side Sliding Door

DOCO SSD-Kit®

KIT 1	KIT 2	KIT 3	KIT 4	Extension KIT
<i>Art.No. 71100</i> <i>L of R</i>	<i>Art.No. 71200</i> <i>L of R</i>	<i>Art.No. 71300</i> <i>L of R</i>	<i>Art.No. 71400</i> <i>L of R</i>	<i>Art.No. 71900</i> <i>L of R</i>
Width X Height (mm) 2500 x 2250	Width X Height (mm) 2500-3500 x 2250	Width X Height (mm) 2500 x 3000	Width X Height (mm) 2500-5000 x 3000	Width X Height (mm) 2000 x 3000
Opening Direction (view from outside) LEFT or RIGHT	Opening Direction (view from outside) LEFT or RIGHT	Opening Direction (view from outside) LEFT or RIGHT	Opening Direction (view from outside) LEFT or RIGHT	
Curve 90°	Curve 90°	Curve 90°	Curve 90°	
Max panels = 5	Max panels = 7	Max panels = 5	Max panels = 10	Max panels = 4
Max. weight 180 kg	Max. weight 240 kg	Max. weight 240 kg	Max. weight 300 kg	Max. weight 180 kg
Build in space 500-600mm (Side room)	Build in space 500-600mm (Side room)	Build in space 500-600mm (Side room)	Build in space 500-600mm (Side room)	

The following documents will be delivered with each kit:

- Production manual
- Assembly manual

Use the know how of our R&D department

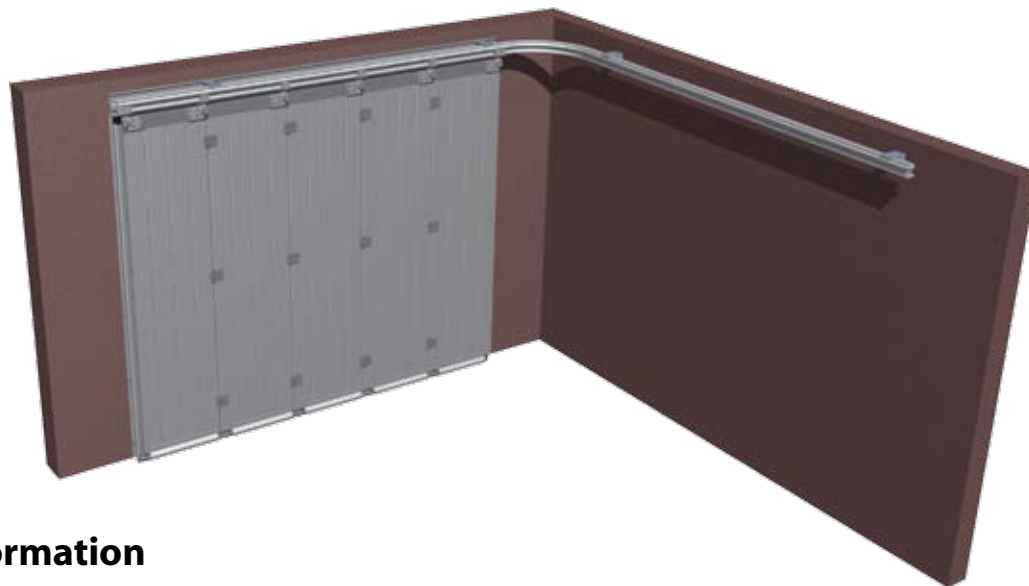
R&D within hand reach!

Do you have a question or a remark with regard to our SSD kit or to our door components? Do you have a technical idea for which you don't have a solution? We offer the solution! By using our R&D team we offer a complete package of services with unlimited possibilities. To the point, creative and customer focused. Our R&D department offers the solution for your creative idea or technical problem!



"WE REALISE EACH TIME THE PERFECT MATCH"

"WE HEAR OUR PARTNERS, WE SEE OPPORTUNITIES AND WE CREATE..."



More information

Do you want to receive more information about our side sliding door, DOCO SSD-KIT and other possibilities? Please contact our sales department of DOCO International, T +31 46 4200666 or per e-mail info@doco-international.com

Visit our website to view all our products www.doco-international.com



DOCO International b.v.

Nusterweg 96
6136 KV Sittard
The Netherlands
T +31 46 4200666
F +31 46 4526894

DOCO International Limited

Units K3 and K4, The Metropolitan Ctr. Field Way
UB6 8UN Greenford Middlesex
United Kingdom
T +44 2088 132266
F +44 2088 132288

info@doco-international.com

DOCO International Limited

Unit 9, Merlin Park
The Furrows
Stretford
M32 0SZ Manchester
T +44 1618 643222
F +44 1618 669988

DOCO International Components s.l.

Avda. Generalitat 55
08530 La Garriga - Barcelona
Spain
T +34 9 38612825
F +34 9 38716592

DOCO International s.r.o.

Haj 352
79812 Kralice na Hané - Prostejov
Czech Republic
T +420 5823 60100
F +420 5823 60300

www.doco-international.com