



Residential Garage Door Openers and Accessories

DOCOMat 600
DOCOMat 800
DOCOMATIC 600
DOCOMATIC 800
DOCOMATIC 1200



Overview	DOCOMat 600 500001	DOCOMat 800 500002	DOCOMatic 600 501001	DOCOMatic 800 501002	DOCOMatic 1200 501003
Area of application					
Maximum door width (mm)	4000	5000	4500	5500	7000
Maximum door leaf weight (kg)	65	85	100	140	170
Maximum door area (m ²)	10	12	12	14	17
Max. Door height, sectional door *(mm)	2300	2300	2400	2400	2400
Extendable up to max. (mm)	---	---	2900 (chain) / 3100 (toothed belt)		6000
Max. Door height, non tilting / tilting door extendable up to max. (mm)	2500	2500	2500	2500	2500
Minimum installation height for rail (mm)	35	35	35	35	35
Suitability for non tilting doors (curved arm)	---	---	---	YES	YES
Suitable swing door fitting	---	---	---	max. 250cm	max. 250cm
Maximum number of parking bays	1	1	1	2	50
Technical Data					
Maximum shear traction force	600 N	800 N	600 N	800 N	1200 N
Maximum speed (cm/sec.)	12	12	18	18	18
Overall length* (mm)	3210	3210	3290	3290	3310
Weight* (kg) approx.	approx. 14	approx. 15	approx. 17	approx. 17	approx. 18
Emitted sound pressure level in dB(A)	</= 70	</= 70	</= 70	</= 70	</= 70
Energy saving toroidal transformer	---	---	•	•	•
Stand-by usage (W), approx.	8	8	4	4	4
Power-on time (ED) in %	30	30	30	30	30
rated service time in min.	4	4	4	4	10
Rated cycles **	15.000	15.000	30.000	50.000	80.000
Power supply	230V/AC	230V/AC	230V/AC	230V/AC	230V/AC
Equipment					
Chain drive unit	●	●	■	■	■
Toothed belt drive unit			■	■	■
One man assembly system			●	●	●
Watchdog protection (self diagnosis)					●
Travel paths by automatic program	●	●	●	●	●
Continuous force monitoring system	●	●	●	●	●
TUV/GS tested safety	●	●	●	●	●
Partial reversing	●	●	●	●	●
Complete reversing					■
Photo cell(s) connection	●	●	●	●	●
Function photo cell test	●	●	●	●	●
Apartment building function					●
Warning light connection					●
Advance warning time, selectable					●
Connection of external control elements	●	●	●	●	●
Pulse repetition function	●	●	●	●	●
Automatic closing function (time select.)			●	●	(●)
Integrated lighting	●	●	●	●	●
Conn. Of external lighting, time selectable					●
Integrated evaluation of safety edges					8,2 and 22 kOhm
Connection "door closed" signal					●
Plug in radio, incl hand transmitter	433.92MHz	433.92MHz	●	●	●
Homelink®compatible from version	6.0	6.0	7.0	7.0	7.0
Load stable soft-start / soft-stop					●
Soft-start / soft-stop	●	●	●	●	●
Including complete emergency release	Internal		external		external
Packaging contains	head with chain drive unit for DH: 2.4 mtr		Only head		Only head

* Specifications for standard rail, 3mtr long

** Assuming use and installation according to DIN EN and annual maintenance

● Included

■ Optional

DOCOMat 600
Art. nr. 500001

DOCOMat 800
Art. nr. 500002

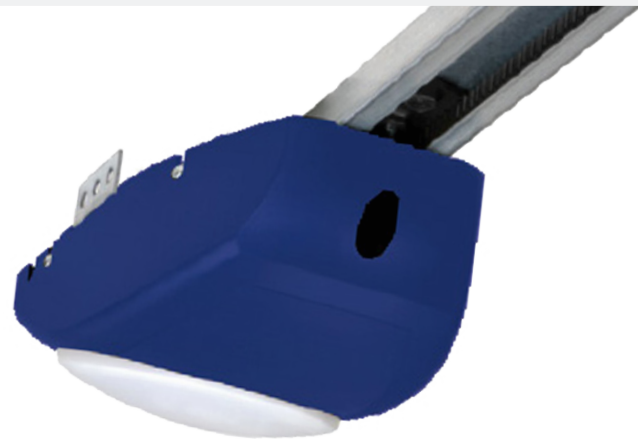


- excellent cost/performance ratio
- high grade mechanical construction
- TÜV-approved security
- very easy installation
- incl. soft-start/-stop and emergency release
- Force monitoring system
- Automatic travel path setting
- Function soft-start / soft-stop
- Integrated lighting 12V/10W
- Security radio system 433.92MHz
- Digital force control
- Connection for photo cells, key switch and push button
- Package contains head and chain drive for 2,4 m door height

DOCOMATIC 600
Art. nr. 501001

DOCOMATIC 800
Art. nr. 501002

- One-man-fast-mounting system
- Extra assuredly sensor technology
- Suitable for overhead- and tilting doors
- Fully fledged emergency release
- Intergrated lighting
- Force monitoring system
- Automatic travel path setting
- Function soft-start / soft-stop
- Integrated lighting 24V/10W
- Security radio system 868.50 MHz
- TÜV/GS approved safety
- Connection for photo cells, key switch and push button
- Automatic closing function
- Package contains only head, rails needs to be ordered separately (Belt or chain version possible)



DOCOMATIC 1200
Art. nr. 501003



- TÜV tested to latest norms
- Fail-safe power amplifiers
- Automatic force monitoring
- Watchdog Protection (self-diagnosis)
- Hall sensors for precise electronic path setting
- One-man assembly system
- Energy-saving toroidal transformer
- Auto-feed with selectable delay and apartment building function
- Safety edge rating 8.20/22.00kOhm
- Integrated lighting, 230V/40W
- Load-stable super-soft run for protection of the complete mechanism
- Status and error messages about 7-segment display
- Full-fledged emergency release
- 24 V/DC DC motor
- Deflection roller with ball bearings
- Package contains only head, rail needs to be ordered separately (chain or belt possible.)

Accessory combination overview	DOCOfat 600	DOCOfat 800	DOCOfatic 600	DOCOfatic 800	DOCOfatic 1200
Description / Art nr.	500001	500002	501001	501002	501003
Transmitter 4-channel / 502150	•	•			
Antenna / 502900	•	•			
Transmitter 4-channel / 503151			•	•	•
Standard toothed belt rail for DH 2,4 m / 503001	•	•	•	•	•
Antenna / 503900			•	•	•
Safety edge / 504900					•
Plug-in lock / 504901	•	•	•	•	•
Curved arm fitting / 504902			•	•	•
Key operated button / 504903	•	•	•	•	•
Key operated button / 504904	•	•	•	•	•
Radio code lock / 504905			•	•	•
Perforated strips / 504906	•	•			
Photo cells FT, range approx. 10.00 m / 504907	•	•	•	•	•
Warning lights, orange, 24V/10-15W / 504908					•
Middle bracket / 504909	•	•	•	•	•
Sectional door fitting / 504910	•	•	•	•	•
Push rod extension / 504911	•	•	•	•	•
Chain rails 3 m / 504915	•	•	•	•	•
Chain rails 3,5 m / 504916	•	•	•	•	•
Chain rails 4 m / 504917	•	•	•	•	•
Rail extension chain 0,5 m / 504918	•	•	•	•	•
Rail extension chain 1 m / 504919	•	•	•	•	•
Rail extension chain 1,5 m / 504920	•	•	•	•	•
Toothed belt rails 3 m / 504921			•	•	•
Toother belt rails 3,5 m / 504922			•	•	•
Toothed belt rails 4 m / 504923			•	•	•
Rail extension toothed belt 0,5 m / 504924			•	•	•
Rail extension toothed belt 1 m / 504925			•	•	•
Rail extension toothed belt 1,5 m / 504926			•	•	•
Toothed belt rails 6 m / 504927			•	•	•



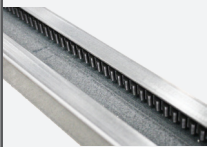
Art. nr. 502150
Transmitter 4-channel



Art. nr. 502900
868.50 MHz Standard supplementary antenna
incl. 6.00 m coaxial cable, magnetic foot, mounting bracket



Art. nr. 503151
Hand transmitter 868.50 MHz, 4-K, black including battery



Art. nr. 503001
Standard belt rail for max. door height 2.4m



Art. nr. 503900
868.50 MHz Standard supplementary antenna
incl. 6.00 m coaxial cable, magnetic foot, mounting bracket



Art. nr. 504900
Safety edges for ohmic evaluation 8.20 kOhm.
EPDM; Profile (WxH) 35 x 65 mm on C-profile rail 35 x 14 mm



Art. nr. 504901
Plug-in lock for installation of all included emergency releases on doors without an interior turn handle.
Maximum door panel thickness 48mm; a hole of 20 mm or 23 mm becomes necessary in the door panel.

Plug-in lock for emergency release
incl. 2 keys, pull rope, extension sleeve



Art. nr. 504902
Special hardware for non-tilting door; is needed to guarantee a proper power transmission to this special type of door.



Art. nr. 504903
Standard control element for secure use of one to two drives. Die-cast metal housing with aluminium front plate, IP 54, design 2-sided pressing incl. Standard cylinder lock with 3 keys. double-keyed (NC contacts 300V, 5A), W70xH80xD47mm



Art. nr. 504904
Standard control element for secure use of one to two drives. Die-cast metal housing with aluminium front plate, IP 54, design 2-sided pressing incl. Standard cylinder lock with 3 keys. double-keyed (NC contacts 300V, 5A), W70xH80xD47mm



Art. nr. 504905
Shockproof AP housing, IP54, approx. 81x81x30mm, similar to RAL 9007. Buttons and control panel of VA. Tamper-proof design. Power supply over 9V block (included). 3 channels for individual 2-6 digit code; 1 channel for free use (e.g., for lighting).



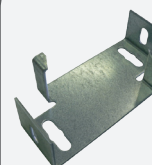
Art. nr. 504906
Perforated strip bracket 6 holes 210 mm



Art. nr. 504907
Photo cells FT, range approx. 10.00 m VU 12V/DC or 24V/AC - contact 1 x UM, max. 24 V/DC, 1A Suitable for use according to machine guideline or EN 13849-1



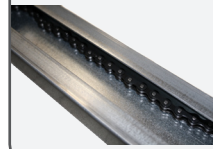
Art. nr. 504908
Warning lights, orange, 24V/10-15W
(without integrated blink mechanism) only for clocked outlets



Art. nr. 504909
Claw for (additional) mounting on our drive rails. Can be used in connection with the perforated strips for hanging the drive when the roof is high and also for additional stabilization of an extended runner. A complete middle bracket already comes enclosed with the standard rails of the sensor line devices and rail extensions! incl. 2 perforated strip brackets, 210 mm, and installation material.

**Art. nr. 504910**

Special fittings for achieving better power transfer to sectional doors with especially thin walls due to an enlarged supporting surface and a larger number of attachment points. Adjustable in height to the upper panel of the door.

**Art. nr. 504918**

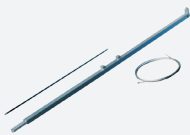
Rail extension Chain 0.5m

Art. nr. 504919

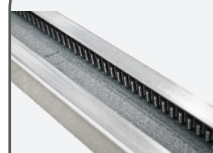
Rail extension Chain 1m

Art. nr. 504920

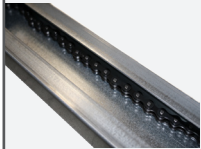
Rail extension Chain 1.5 m

**Art. nr. 504911**

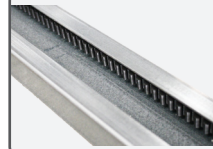
Special fittings whose use allows the complete door drive to be shifted backward by the corresponding length. Becomes necessary if at one point of the door travel there is not enough space left between the upper edge of the door and the ceiling (min. 35 mm). Suitable for direct, fast mounting for the slides of all type standard rails. Push rod extension 1.00 m

**Art. nr. 504921**

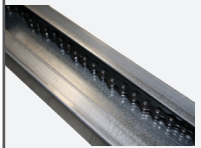
Toothed belt 3.00 m rail
(divided 2 x 1.50 m)
Max. door height: 2.4m

**Art. nr. 504915**

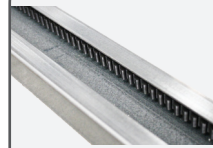
Chains - rails 3.00 m rail
(divided 2 x 1.50 m)
Max door height: 2.4m

**Art. nr. 504922**

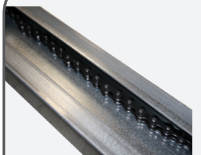
Toothed belt 3.50 m rail
(divided 2 + 1.50 m)
Max. door height: 2.9m

**Art. nr. 504916**

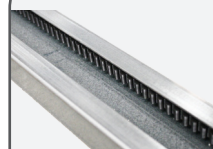
Chains - rails 3.50 m rail
(divided 2.00 + 1.50 m)
Max door height: 2.9m

**Art. nr. 504923**

Toothed belt 4 m rail
(divided 2 x 2.00 m)
Max door height: 3.4m

**Art. nr. 504917**

Chains - rails 4.00 m rail
(divided 2 x 2.00 m)
Max. door height: 3.4m

**Art. nr. 504924**

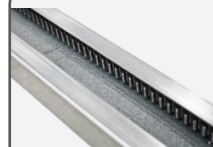
Rail extension Belt 0.5m

Art. nr. 504925

Rail extension Belt 1m

Art. nr. 504926

Rail extension Belt 1.5m

**Art. nr. 504927**

Rail 6 mtr belt
Max. door height: 5.4m

Doco International B.V.
Nusterweg 96
6136 KV Sittard
P.O. Box 427
6130 AK Sittard
The Netherlands
Tel: +31 (0) 464200666
Fax: +31 (0) 464526894

Doco International Limited
Unit 1 Northolt Trading Estate
Belvue Road
Northolt Middlesex
UB5 5QS
United Kingdom
Tel: +44 (0) 20 8839 8587
Fax: +44 (0) 20 8842 3661

Doco International
Southern Europe S.L.
P.I. Can Met Sidro
Avenida Generalitat, 55
08530 La Garriga / Barcelona
España / Spain
Tel: +34 9 3 861 28 25
Fax: +34 9 3 871 65 92

Doco International
Central Europe s.r.o.
Háj 352
798 12 Kralice na Hané
Czech Republic
Tel: +420 582 360 100
Fax: +420 582 360 300